

Monthly Weather Summary in Thailand

October 2020

Thailand's weather in October 2020 was dominated by the monsoon trough laying across the upper Thailand in most of the month and moved southwards to lie over the center southern part during the end of the month coupled with the moderate to active southwest monsoon prevailed over the Andaman Sea, Thailand and the Gulf of Thailand. Moreover there were 5 tropical cyclones having some effects of rainfall on Thailand, the tropical depression over the central South China Sea moved through Vietnam and Cambodia and dissipated over the upper Gulf of Thailand during beginning of the month. During middle of the month, the tropical storm "LINFA (2015)" and "NANGKA (2016)" which dissipated over Laos associated with the tropical depression in the central South China Sea that moved into disintegration in Cambodia after that the typhoon "SAUDEL (2017)" over the central China Sea moved into dissipation in Laos during the end of the month furthermore the typhoon "MOLAVE (2018)" which entered Thailand at Ubon Ratchathani province on October 29 as tropical depression strength then it downgraded into the active low pressure cell and dissipated on the next time. This conditions brought abundant rainfall in majority areas of Thailand and flash floods was reported in several places. Monthly rainfall was above normal in most parts of Thailand i.e. northeastern part 81.4 mm (70%), central part 68.3 mm (37%) eastern part 122.1 mm (54%), southern part (eastern coast) 19.7 mm (8%) and southern part (west coast) 209.3 mm (57%) whereas northern part were below normal 27.2 mm (22%) and the new highest amount of daily rainfall and monthly total rainfall in October was established. Meanwhile the high pressure area from China extended its ridge to cover upper Thailand since the end of the month and the replenishment of the southwest monsoon prevailing over upper Thailand changed to the northeast monsoon during the mentioned period. These caused decreasing in rainfall and temperature especially in northern and northeastern parts that considered as the beginning of the 2020 winter season was October 22. Mean temperature in Thailand was below normal particularly in northeastern, central and eastern parts where mean temperatures were lower than normal in all places. More details on the weather are as follow:

1 – 10 October: The monsoon trough laying across lower northern, central and lower northeastern parts half of the period then it moved southward to lie across lower central, upper southern and eastern parts toward the central China Sea almost the period accompanied with the strengthening of the moderate southwest monsoon prevailing over the Andaman Sea, Thailand and the Gulf of Thailand during the second half of the period due to the influence of the low pressure cell in central China Sea intensified into a tropical depression at 04:00 P.M. on October 7 and degenerated into the active low pressure cell and later moved through Cambodia and moved into the Gulf of Thailand on the next time. These caused abundant rainfall especially fairly widespread rain in central, eastern and southern parts with heavy to very heavy rainfall in some places. The highest daily rainfall in upper Thailand was 244.4 millimeters at Sattahip in Chonburi on October 9 with flash flooding at Loei and Nakhon Ratchasima provinces on October 3, at Kamphaeng Phet and Prachinburi provinces on October 4, at Nan and Uttaradit provinces on October 5, at Nakhon Ratchasima and Chachoengsao provinces on October 8, at Kanchanaburi nad Sa Kae provinces on October 9 and 10, at Ratchaburi, Chonburi and Chantaburi provinces on October 10. The gusty wind was reported at Chainat province on October 6 and 7. In southern part, the maximum daily rainfall was 282.2 millimeters at Mueang in Phetchaburi province on October 9 with flash flooding at Phetchaburi and Prachuap Khiri Khan provinces on October 10.

11 – 20 October: The monsoon trough laying across lower central, upper southern and eastern parts throughout the period toward the low pressure cell over Laos, the coast of Vietnam and Cambodia, respectively accompanied with the active southwest monsoon prevailed over the Andaman Sea, Thailand and the Gulf of Thailand almost the period. Besides, under the influence of the tropical storm “LINFA (2015)” in the central South China Sea made landfall over Quang Ngai, Vietnam at 10.00 A.M. on October 11 and downgraded into the tropical depression on the next time after that degenerated into the active low pressure cell covering Attapu, Laos on October 12. Together with the tropical storm “NANGKA (2016)” in upper the South China Sea moved through the Hainan Island into the Gulf of Tonkin and made landfall over Ninh Binh, Vietnam at 04.00 P.M. on October 14. It weakened into a tropical depression at Thanh Hoa, Vietnam at 07.00 p.m. before weakening into the active low pressure cell covering Hua Phan, Laos on October 15. In addition, the tropical depression in the central South China Sea made landfall over central Vietnam at 01.00 A.M. on October 17 and degenerated into an area of low pressure covering Cambodia on October 18. These conditions caused abundant rainfall over upper Thailand almost the period especially fairly widespread rain with heavy rainfall in several areas and very heavy rainfall in some areas over lower northeastern, central and eastern parts on October 15-19. The heaviest daily rainfall in upper Thailand was 176.3 millimeters at Wattana Nakhon, Sa Kaeo provinces on October 17 and flash floods were reported at Nakhon Ratchasima, Si Saket, Ubon Ratchathani, Chaiyaphum, Ratchaburi, Uthai Thani, Samut Sakhon, Kanchanaburi, Sa Kaeo, Chachoengsao Chonburi and Prachinburi provinces on October 12-18. The highest daily rainfall in southern part was 202.0 millimeters at Kapoe, Ranong on October 13. Flash floods occurred at Nakhon Si Thammarat, Songkhla, Surat Thani, Phang-nga, Trang, Satun and Krabi provinces during the first half of the period and landslide at Phuket province on October 12 and 13.

21 – 31 October: The ridge of high pressure areas from China covered to upper Thailand during the beginning and middle of the period after that another high pressure extended its ridge to cover northern and upper northeastern parts brought temperature was decreased over upper Thailand with cool weather especially in northern and northeastern parts. Moreover there were 2 tropical cyclones having some effects of rainfall on Thailand, the typhoon “SAUDEL (2017)” in the middle South China Sea making landfall over Vietnam as tropical depression strength in the morning of October 26. It moved to Laos and dissipated in afternoon of the same day. Accompanied with the typhoon “MOLAVE (2018)” which hit over Quang Ngai, Vietnam at 10.00 A.M. of October 28 and downgraded into tropical storm over Quang Nam, Vietnam then it moved through Laos and downgraded into tropical depression before entering Thailand at Trakan Phuet Phon in Ubon Ratchathani province at 02.00 A.M. on October 29 and degenerated into the active low pressure cell after that dissipating in the morning of October 30. In addition, the replenishment of the southwest monsoon prevailing over the Andaman Sea, Thailand and the Gulf of Thailand changed to the northeast monsoon during the end of the period. These conditions caused isolated to scattered rain over upper Thailand during the first half of the period and later increasing in rainfall with fairly widespread to widespread rain with heavy to very heavy rainfall in some areas and the heaviest daily rainfall in upper Thailand was 108.5 millimeters at Na Chaluai in Ubon Ratchathani province on October 28. Floods occurred continuous from last period at Nakhon Ratchasima, Suphanburi and Prachinburi provinces. In southern part, fairly widespread to widespread rain almost the period with heavy to very heavy rainfall in some areas. The maximum daily rainfall was 97.0 millimeters at Ban Na San in Surat Thani province on October 24 and floods occurred continuous from last period at Surat Thani province with gusty wind at Chum Phon province on October 28.

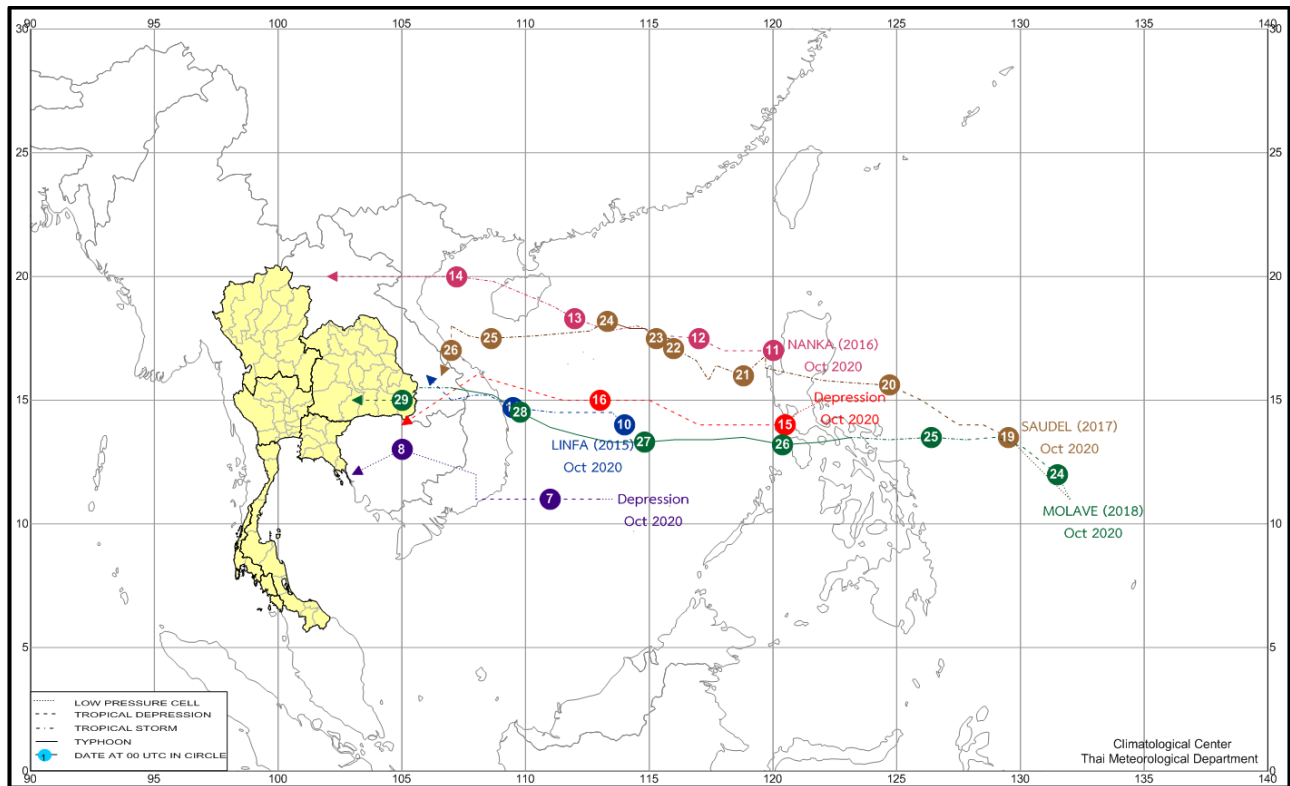
Breaking records of the highest daily rainfall in October

Station	New Record 2020		Previous Record		Start since New Record 2020
	Rainfall (mm.)	Date	Rainfall (mm.)	Date / Year	
Mueang (Nakhon Ratchasima)	141.5	15	136.0	25/1976	1951
Mueang (Buriram)	110.1	5	100.6	2/2006	2003
Aranyaprathet (Sa Kaeo)	114.2	16	107.7	23/1970	1951
Mueang (Phetchaburi)	282.2	9	199.4	25/1999	1981
Sadao (Songkhla)	95.2	22	79.7	3/2005	1996

Breaking records of the highest monthly rainfall in October

Station	New Record 2020	Previous Record		Start since
		Previous Record	Year	
Mueang (Mukdahan)	277.4	270.9	2007	1953
Mueang (Buriram)	282.8	263.8	2006	2003
Shrasaeng (Surat Thani)	447.1	419.1	2014	1995
Chawang (Nakhon Si Thammarat)	373.3	332.0	2016	1995

Track of tropical storm that affected and entering Thailand rainfall in October 2020



Note :

- 1) Rainfall, temperatures and natural disasters in this report were updated up to November 5, 2020.
- 2) “LINFA” mean lotus by Macao.
- 3) “NANGKA” mean jackfruit by Malaysia.
- 4) “SAUDEL” mean Name of the chief of the tribe's guards on Pohnpei Island by Federated States of Micronesia.
- 5) “MOLAVE” mean a species of hard wood used in furniture by Philippines.

Climatological Center
 Meteorological Development Division
 Meteorological Department

Monthly Current Report
Rainfall and Accumulative Rainfall
October 2020

Northern Thailand

Station	Temperature (°c)		Rainfall (mm)		Accumulative rainfall (mm) Since 1 January	
	Mean	Above or below normal	Actual	Above or below normal	Actual	Above or below normal
Chiang Rai	25.7	0.6	25.1	-99.8	1179.9	-437.4
Mae Hong Son	27.0	0.6	33.7	-80.8	950.9	-286.2
Phayao	25.5	0.2	43.6	-79.0	772.6	-316.2
Chiang Mai	26.9	0.8	95.1	-22.5	1083.0	22.2
Tha Wang Pha	26.3	0.5	37.6	-45.8	1194.6	-174.9
Nan	26.7	0.3	29.7	-40.6	1203.7	-3.7
Lamphun	26.3	0.2	100.2	-9.9	1050.4	98.1
Lampang	26.4	0.1	158.4	60.1	951.0	-58.0
Mae Sariang	26.9	0.8	35.7	-79.5	700.1	-406.0
Phrae	26.8	0.3	54.0	-34.8	1368.2	286.8
Uttaradit	27.6	-0.1	48.1	-62.9	1086.1	-253.8
Bhumibol Dam	26.3	-0.1	164.9	-39.4	728.0	-263.4
Tak	26.7	-0.1	183.8	-15.4	861.1	-140.3
Mae Sot	26.8	0.7	96.6	-5.5	892.3	-545.7
Umphang	24.9	1.0	227.3	71.5	1327.8	-103.2
Phitsanulok	27.1	-0.7	179.9	17.4	1147.1	-125.4
Lom Sak	26.4	-0.4	110.8	22.3	1075.9	51.2
Phetchabun	26.5	-0.3	105.1	14.7	938.1	-175.9
Wichian Buri	26.5	-1.2	112.0	-19.6	1170.4	-25.6
Kamphaeng Phet	27.1	-0.1	97.2	-94.5	630.3	-625.6
Over the area	26.5	0.1	96.9	-27.2 -22%	1015.6	-174.2 -15%

Northeastern Thailand

Station	Temperature (°c)		Rainfall (mm)		Accumulative rainfall (mm) Since 1 January	
	Mean	Above or below normal	Actual	Above or below normal	Actual	Above or below normal
Nong Khai	26.8	0.1	161.0	70.1	1954.4	365.7
Loei	25.5	-0.1	150.1	26.8	1165.8	-46.4
Udon Thani	26.1	-0.8	150.2	60.1	1217.8	-187.4
Nakhon Phanom	25.7	-0.7	140.5	43.5	1294.5	-1037.8
Sakon Nakhon	25.3	-1.1	144.7	67.8	1283.4	-344.1
Mukdahan	25.2	-1.1	277.4	176.8	1165.1	-299.0
Khon Kaen	25.5	-1.0	206.1	88.4	1278.1	51.3
Kosum Phisai	26.0	-1.1	128.6	17.2	1263.4	20.9
Roi Et	25.5	-1.2	239.5	132.2	1286.0	-38.7
Chaiyaphum	25.8	-1.2	138.7	1.7	1158.7	44.6
Ubon Ratchathani	25.6	-1.2	194.7	71.6	1594.5	36.4
Tha Tum	25.9	-1.1	179.1	52.8	1023.6	-342.3
Surin	25.4	-1.3	172.3	44.1	1386.8	-14.8
Nakhon Ratchasima	25.3	-1.4	282.2	135.9	1454.3	409.4
Chok Chai	25.4	-1.2	315.3	151.0	1174.6	132.4
Nang Rong	25.1	-1.4	295.6	161.7	1602.3	449.0
Over the area	25.6	-1.0	198.5	81.4 70%	1331.5	-50.0 -4%

- NOTES :
- 1) Mean temperature is the average of daily dry-bulb temperature
 - 2) "T" is trace, rainfall amount less than 0.1 mm.
 - 3) "blank" is incomplete data.
 - 4) Temperature and rainfall are preliminary data.

Monthly Current Report
Rainfall and Accumulative Rainfall
October 2020

Central Thailand

Station	Temperature (°c)		Rainfall (mm)		Accumulative rainfall (mm) Since 1 January	
	Mean	Above or below normal	Actual	Above or below normal	Actual	Above or below normal
Nakhon Sawan	27.1	-0.6	167.4	14.0	792.8	-324.9
Bua Chum	26.1	-1.1	246.8	119.5	1096.1	35.4
Lop Buri	26.9	-0.9	145.3	-8.4	894.8	-192.7
Suphan Buri	27.1	-0.9	281.5	84.8	845.0	-79.6
Thong Pha Phum	26.3	-0.3	290.3	118.0	1500.3	-255.9
Kanchanaburi	26.7	-0.6	293.3	84.1	1033.8	42.2
Bangkok Airport	27.1	-1.1	244.7	52.8	1272.3	-59.5
Bangkok Metropolis	27.3	-0.8	373.7	81.6	1617.6	25.2
Over the area	26.8	-0.8	255.4	68.3 37%	1131.6	-101.2 -8%

Eastern Thailand

Station	Temperature (°c)		Rainfall (mm)		Accumulative rainfall (mm) Since 1 January	
	Mean	Above or below normal	Actual	Above or below normal	Actual	Above or below normal
Prachin Buri	27.4	-0.7	210.3	49.4	1521.3	-265.3
Kabin Buri	26.7	-0.8	258.9	104.4	1476.3	-87.5
Aranyaprathet	26.8	-0.7	310.9	136.7	1240.4	-64.1
Chon Buri	27.5	-0.4	246.9	38.0	1228.6	-12.7
Ko Sichang	27.4	-0.1	311.4	104.3	1152.4	2.6
Pattaya	26.9	-0.1	241.3	25.2	981.5	-48.8
Sattahip	27.2	-0.1	726.0	466.2	2124.6	944.6
Rayong	27.0	-0.6	256.8	62.4	1675.3	348.8
Chanthaburi	26.9	-0.1	351.5	53.9	2499.3	-433.6
Khlong Ya	26.8	0.0	558.0	180.6	3449.1	-1301.8
Over the area	27.1	-0.3	347.2	122.1 54%	1734.9	-91.9 -5%

- NOTES :
- 1) Mean temperature is the average of daily dry-bulb temperature
 - 2) "T" is trace, rainfall amount less than 0.1 mm.
 - 3) "blank" is incomplete data.
 - 4) Temperature and rainfall are preliminary data.

Monthly Current Report
Rainfall and Accumulative Rainfall
October 2020

Southern Thailand, east coast

Station	Temperature (°c)		Rainfall (mm)		Accumulative rainfall (mm) Since 1 January	
	Mean	Above or below normal	Actual	Above or below normal	Actual	Above or below normal
Phetchaburi	27.0	-0.7	399.9	121.5	869.8	-12.1
Hua Hin	26.9	-0.5	429.4	183.2	893.1	47.1
Prachuap Khiri Khan	27.1	0.0	299.7	71.9	964.2	41.9
Chumphon	26.6	0.0	164.6	-87.0	1291.9	-169.6
Surat Thani	26.5	0.1	316.2	79.8	1419.4	256.7
Ko Samui	27.4	0.2	199.1	-110.7	1238.0	-5.2
Nakhon Si Thammarat	27.1	0.4	262.3	-40.7	1668.7	255.1
Songkhle	27.2	-0.1	285.6	28.5	1213.5	137.4
Hat Yai Airport	26.6	0.1	229.8	2.0	1109.6	-31.9
Pattani Airport	27.2	0.3	159.7	-56.5	1524.1	443.9
Narathiwat	27.6	0.7	279.0	24.6	1467.1	126.9
Over the area	27.0	0.0	275.0	19.7 8%	1241.8	99.0 9%

Southern Thailand, west coast

Station	Temperature (°c)		Rainfall (mm)		Accumulative rainfall (mm) Since 1 January	
	Mean	Above or below normal	Actual	Above or below normal	Actual	Above or below normal
Ranong	26.2	-0.2	631.5	207.0	2890.4	-980.2
Takua Pa	26.4	-0.1	905.7	387.9	3511.4	156.4
Phuket	27.4	0.0	444.8	124.7	2201.8	232.1
Phuket Airport	27.5	0.5	552.3	198.9	2597.4	397.6
Ko Lanta	27.4	0.1	548.0	222.6	2333.5	359.6
Trang Airport	26.7	0.3	522.8	237.3	1756.8	-62.4
Satun	27.1	0.3	425.3	86.3	1999.4	30.3
Over the area	27.0	0.2	575.8	209.3 57%	2470.1	19.1 1%

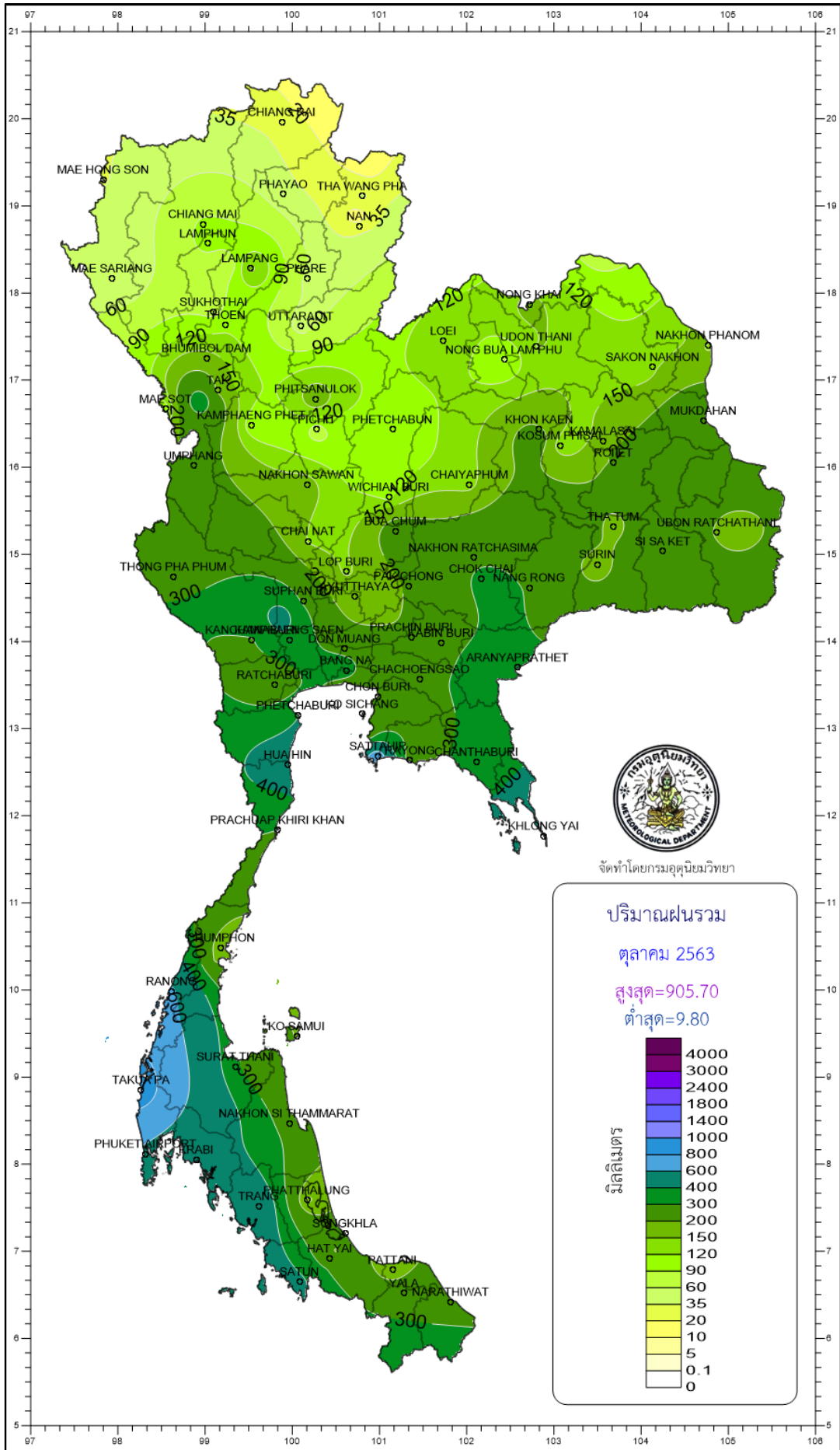
- NOTES :
- 1) Mean temperature is the average of daily dry-bulb temperature
 - 2) "T" is trace, rainfall amount less than 0.1 mm.
 - 3) "blank" is incomplete data.
 - 4) Temperature and rainfall are preliminary data.

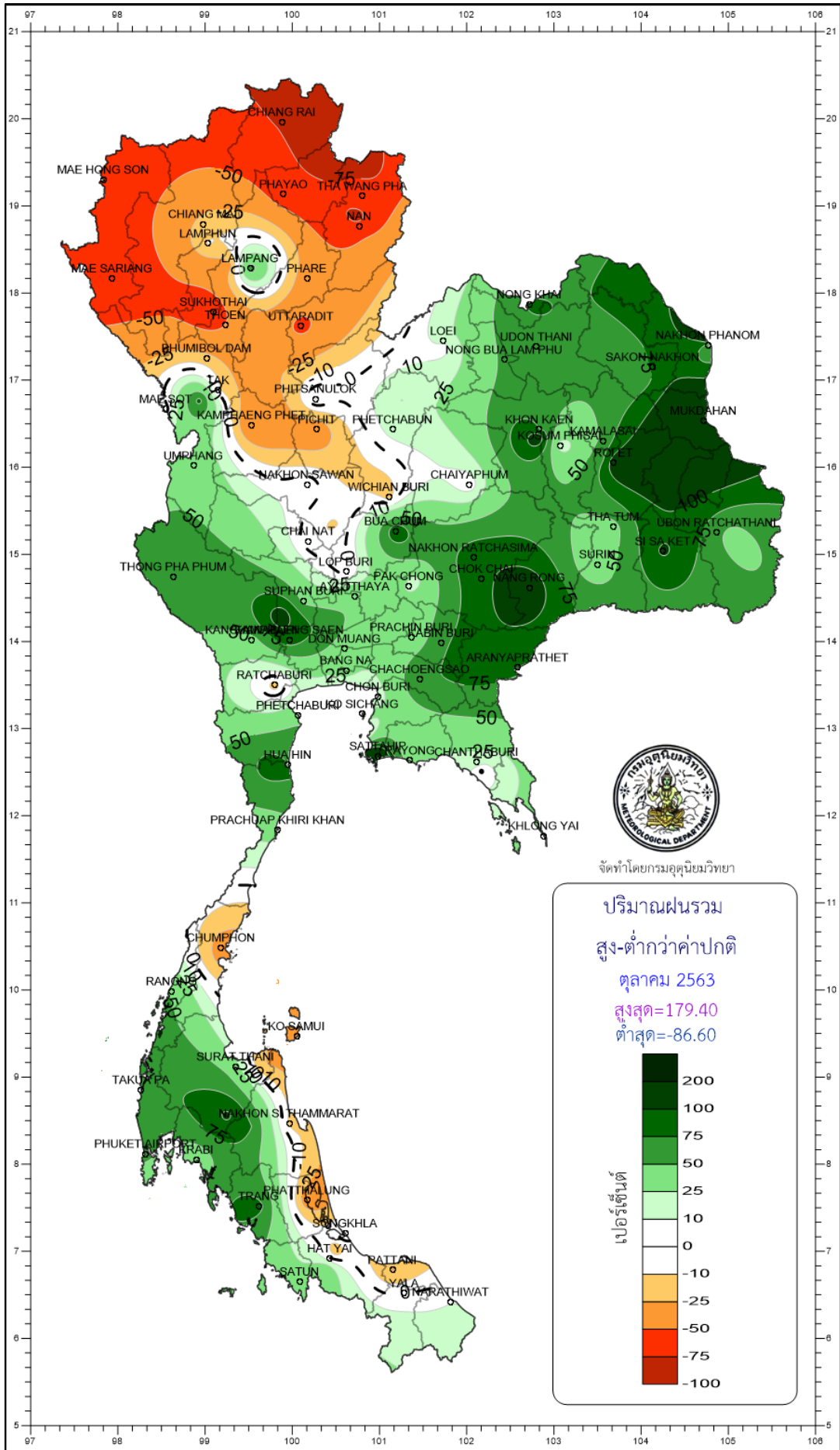
Monthly Current Report

October 2020

Region	Station	Temperature (°c)		Rainfall (mm)		Accumulative rainfall (mm) Since 1 January	
		Mean	Above or below normal	Actual	Above or below normal	Actual	Above or below normal
North	Chiang Rai	25.7	0.6	25.1	-99.8	1179.9	-437.4
	Mae Hong Son	27.0	0.6	33.7	-80.8	950.9	-286.2
	Phayao	25.5	0.2	43.6	-79.0	772.6	-316.2
	Chiang Mai	26.9	0.8	95.1	-22.5	1083.0	22.2
	Tha Wang Pha	26.3	0.5	37.6	-45.8	1194.6	-174.9
	Nan	26.7	0.3	29.7	-40.6	1203.7	-3.7
	Lamphun	26.3	0.2	100.2	-9.9	1050.4	98.1
	Lampang	26.4	0.1	158.4	60.1	951.0	-58.0
	Mae Sariang	26.9	0.8	35.7	-79.5	700.1	-406.0
	Phrae	26.8	0.3	54.0	-34.8	1368.2	286.8
	Uttaradit	27.6	-0.1	48.1	-62.9	1086.1	-253.8
	Bhumibol Dam	26.3	-0.1	164.9	-39.4	728.0	-263.4
	Tak	26.7	-0.1	183.8	-15.4	861.1	-140.3
	Mae Sot	26.8	0.7	96.6	-5.5	892.3	-545.7
	Umphang	24.9	1.0	227.3	71.5	1327.8	-103.2
	Phitsanulok	27.1	-0.7	179.9	17.4	1147.1	-125.4
	Lom Sak	26.4	-0.4	110.8	22.3	1075.9	51.2
Phetchabun	26.5	-0.3	105.1	14.7	938.1	-175.9	
Wichian Buri	26.5	-1.2	112.0	-19.6	1170.4	-25.6	
Kamphaeng Phet	27.1	-0.1	97.2	-94.5	630.3	-625.6	
Northeast	Nong Khai	26.8	0.1	161.0	70.1	1954.4	365.7
	Loei	25.5	-0.1	150.1	26.8	1165.8	-46.4
	Udon Thani	26.1	-0.8	150.2	60.1	1217.8	-187.4
	Nakhon Phanom	25.7	-0.7	140.5	43.5	1294.5	-1037.8
	Sakon Nakhon	25.3	-1.1	144.7	67.8	1283.4	-344.1
	Mukdahan	25.2	-1.1	277.4	176.8	1165.1	-299.0
	Khon Kaen	25.5	-1.0	206.1	88.4	1278.1	51.3
	Kosum Phisai	26.0	-1.1	128.6	17.2	1263.4	20.9
	Roi Et	25.5	-1.2	239.5	132.2	1286.0	-38.7
	Chaiyaphum	25.8	-1.2	138.7	1.7	1158.7	44.6
	Ubon Ratchathani	25.6	-1.2	194.7	71.6	1594.5	36.4
	Tha Tum	25.9	-1.1	179.1	52.8	1023.6	-342.3
	Surin	25.4	-1.3	172.3	44.1	1386.8	-14.8
	Nakhon Ratchasima	25.3	-1.4	282.2	135.9	1454.3	409.4
Chok Chai	25.4	-1.2	315.3	151.0	1174.6	132.4	
Nang Rong	25.1	-1.4	295.6	161.7	1602.3	449.0	
Central	Nakhon Sawan	27.1	-0.6	167.4	14.0	792.8	-324.9
	Bua Chum	26.1	-1.1	246.8	119.5	1096.1	35.4
	Lop Buri	26.9	-0.9	145.3	-8.4	894.8	-192.7
	Suphan Buri	27.1	-0.9	281.5	84.8	845.0	-79.6
	Thong Pha Phum	26.3	-0.3	290.3	118.0	1500.3	-255.9
	Kanchanaburi	26.7	-0.6	293.3	84.1	1033.8	42.2
	Bangkok Airport	27.1	-1.1	244.7	52.8	1272.3	-59.5
	Bangkok Metropolis	27.3	-0.8	373.7	81.6	1617.6	25.2
East	Prachin Buri	27.4	-0.7	210.3	49.4	1521.3	-265.3
	Kabin Buri	26.7	-0.8	258.9	104.4	1476.3	-87.5
	Aranyaprathet	26.8	-0.7	310.9	136.7	1240.4	-64.1
	Chon Buri	27.5	-0.4	246.9	38.0	1228.6	-12.7
	Ko Sichang	27.4	-0.1	311.4	104.3	1152.4	2.6
	Pattaya	26.9	-0.1	241.3	25.2	981.5	-48.8
	Sattahip	27.2	-0.1	726.0	466.2	2124.6	944.6
	Rayong	27.0	-0.6	256.8	62.4	1675.3	348.8
	Chanthaburi	26.9	-0.1	351.5	53.9	2499.3	-433.6
Khlong Yai	26.8	0.0	558.0	180.6	3449.1	-1301.8	
South (East Coast)	Phetchaburi	27.0	-0.7	399.9	121.5	869.8	-12.1
	Hua Hin	26.9	-0.5	429.4	183.2	893.1	47.1
	Prachuap Khiri Khan	27.1	0.0	299.7	71.9	964.2	41.9
	Chumphon	26.6	0.0	164.6	-87.0	1291.9	-169.6
	Surat Thani	26.5	0.1	316.2	79.8	1419.4	256.7
	Ko Samui	27.4	0.2	199.1	-110.7	1238.0	-5.2
	Nakhon Si Thammarat	27.1	0.4	262.3	-40.7	1668.7	255.1
	Songkhla	27.2	-0.1	285.6	28.5	1213.5	137.4
	Hat Yai Airport	26.6	0.1	229.8	2.0	1109.6	-31.9
	Pattani Airport	27.2	0.3	159.7	-56.5	1524.1	443.9
Narathiwat	27.6	0.7	279.0	24.6	1467.1	126.9	
South (West Coast)	Ranong	26.2	-0.2	631.5	207.0	2890.4	-980.2
	Takua Pa	26.4	-0.1	905.7	387.9	3511.4	156.4
	Phuket	27.4	0.0	444.8	124.7	2201.8	232.1
	Phuket Airport	27.5	0.5	552.3	198.9	2597.4	397.6
	Ko Lanta	27.4	0.1	548.0	222.6	2333.5	359.6
	Trang Airport	26.7	0.3	522.8	237.3	1756.8	-62.4
	Satun	27.1	0.3	425.3	86.3	1999.4	30.3
	Over the area	26.6	-0.2	245.6	58.4	1374.5	-66.6
					31%		-5%

- NOTES :
- 1) Mean temperature is the average of daily dry-bulb temperature
 - 2) "T" is trace, rainfall amount less than 0.1 mm.
 - 3) "blank" is incomplete data
 - 4) Temperature and rainfall are preliminary data





จัดทำโดยกรมอุตุนิยมวิทยา

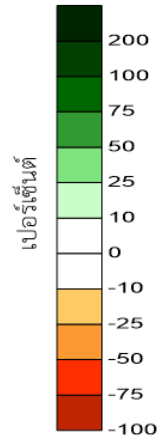
ปริมาณฝนรวม

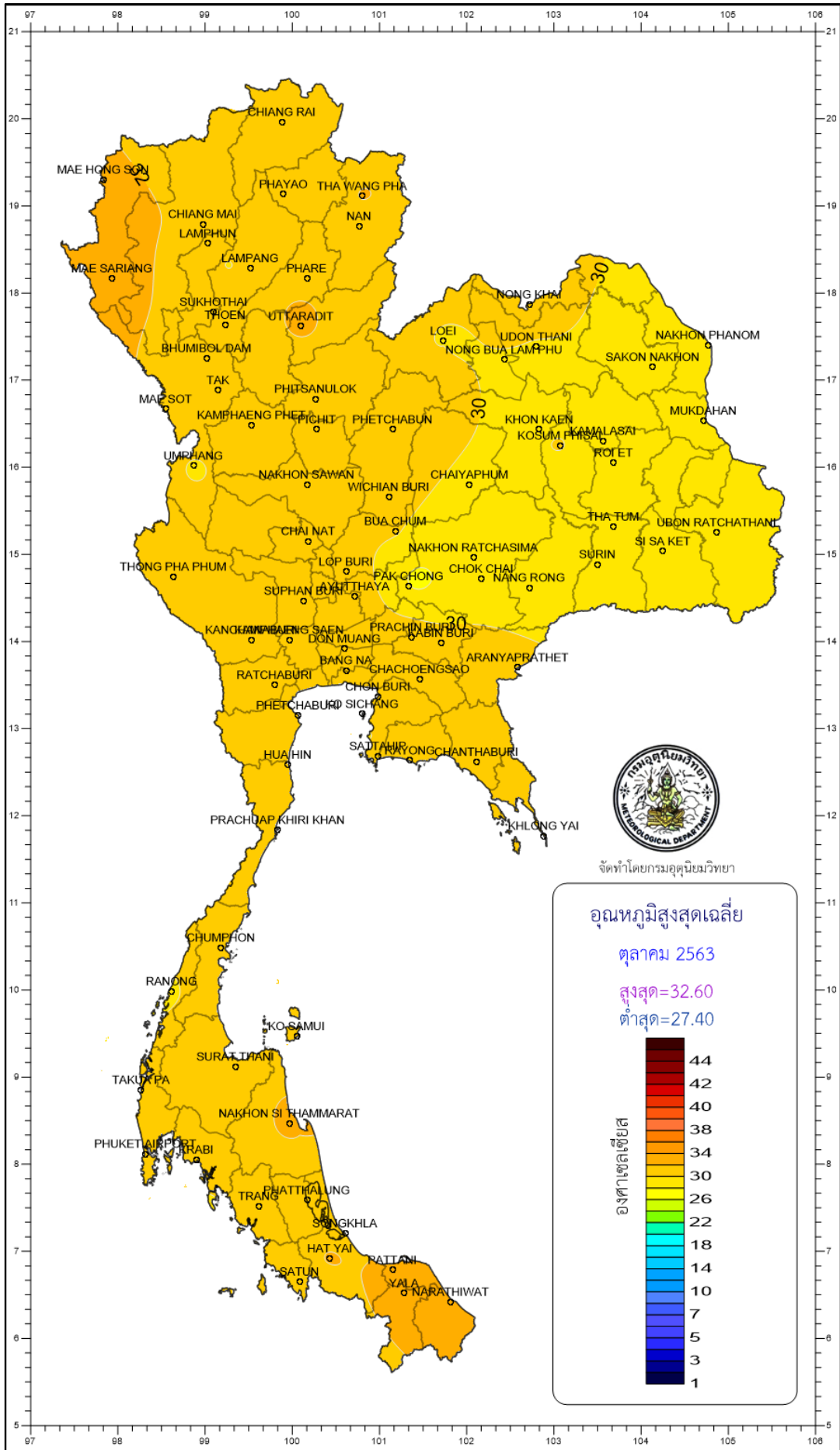
สูง-ต่ำกว่าค่าปกติ

ตุลาคม 2563

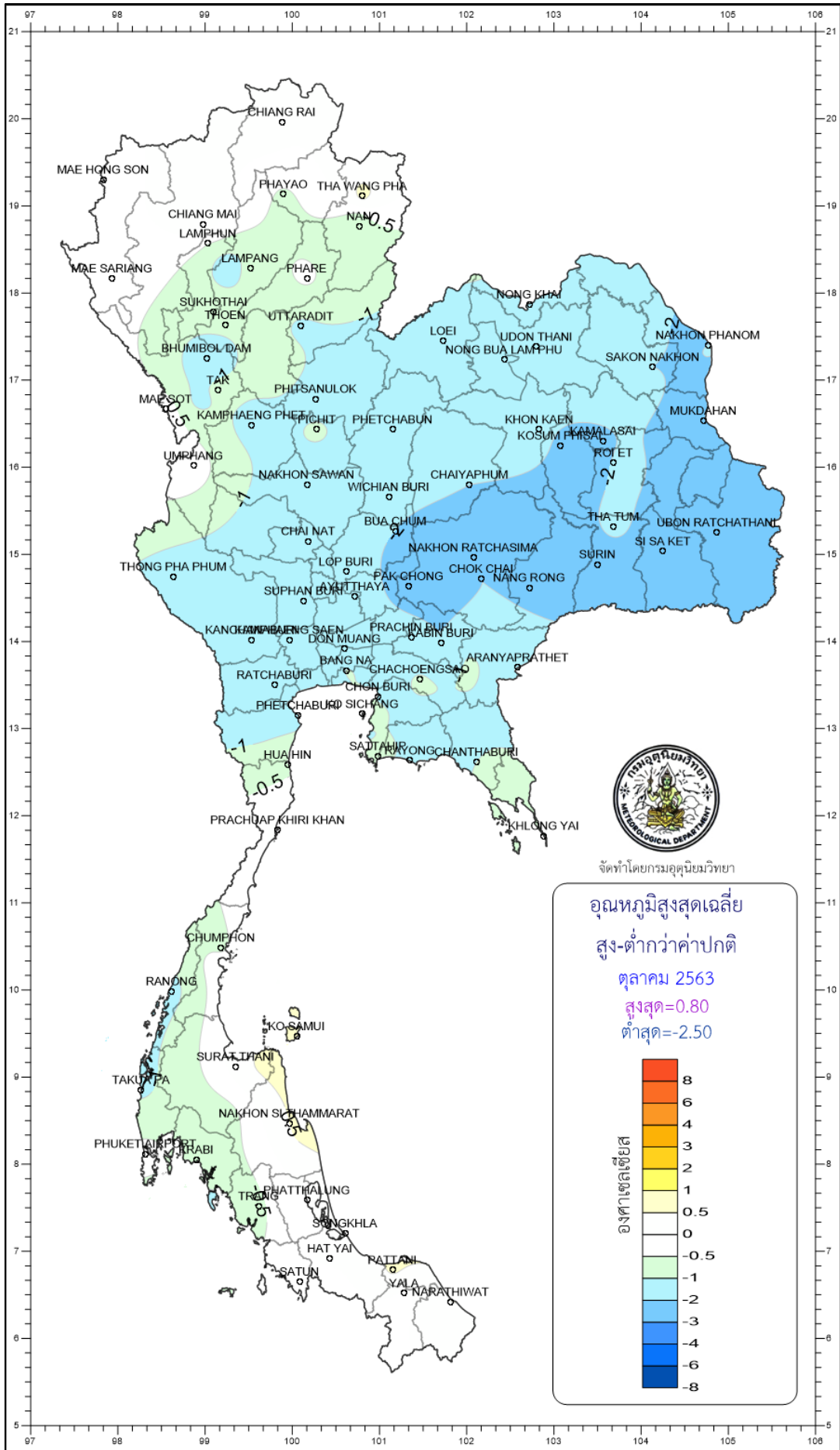
สูงสุด=179.40

ต่ำสุด=-86.60

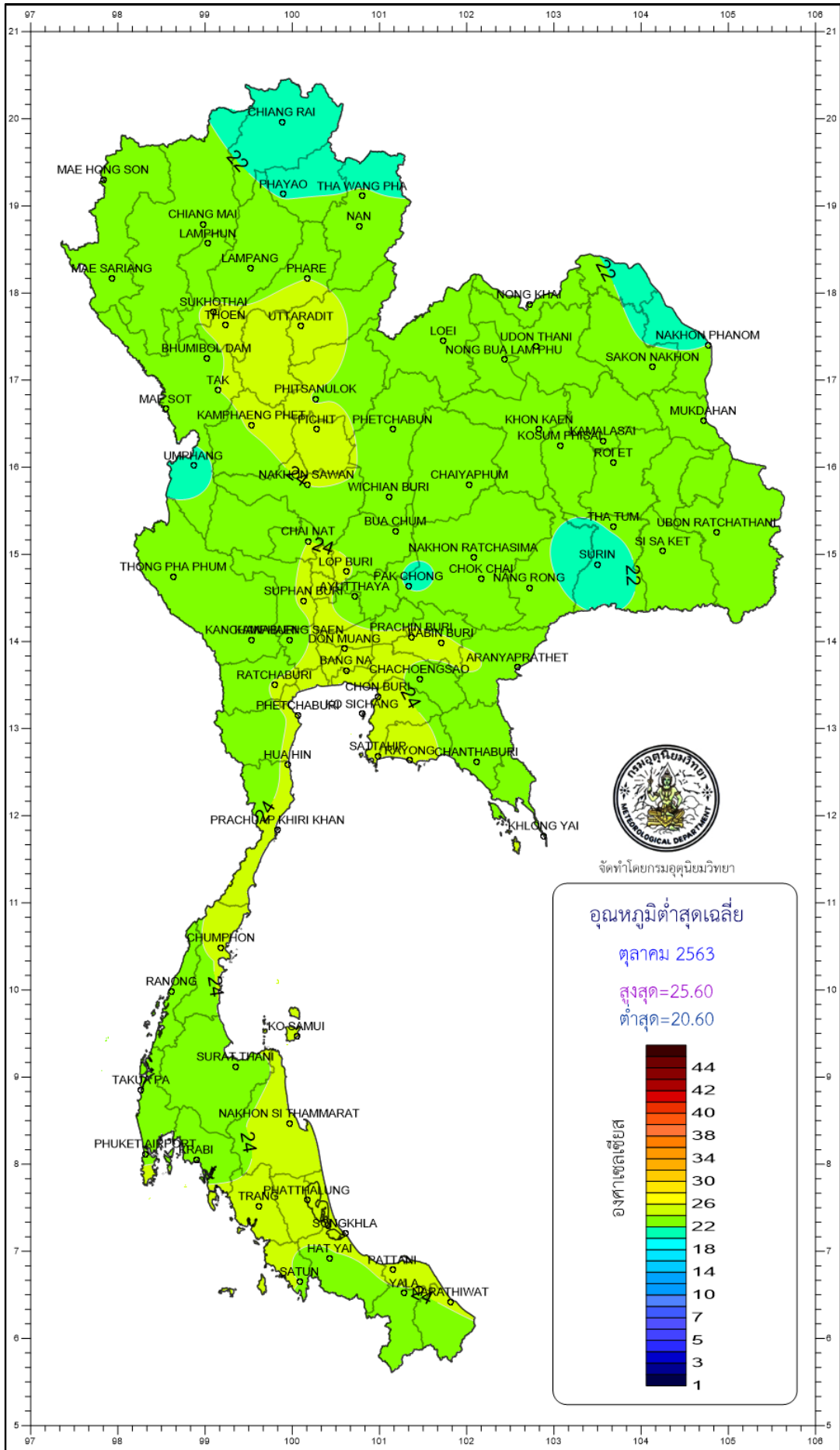


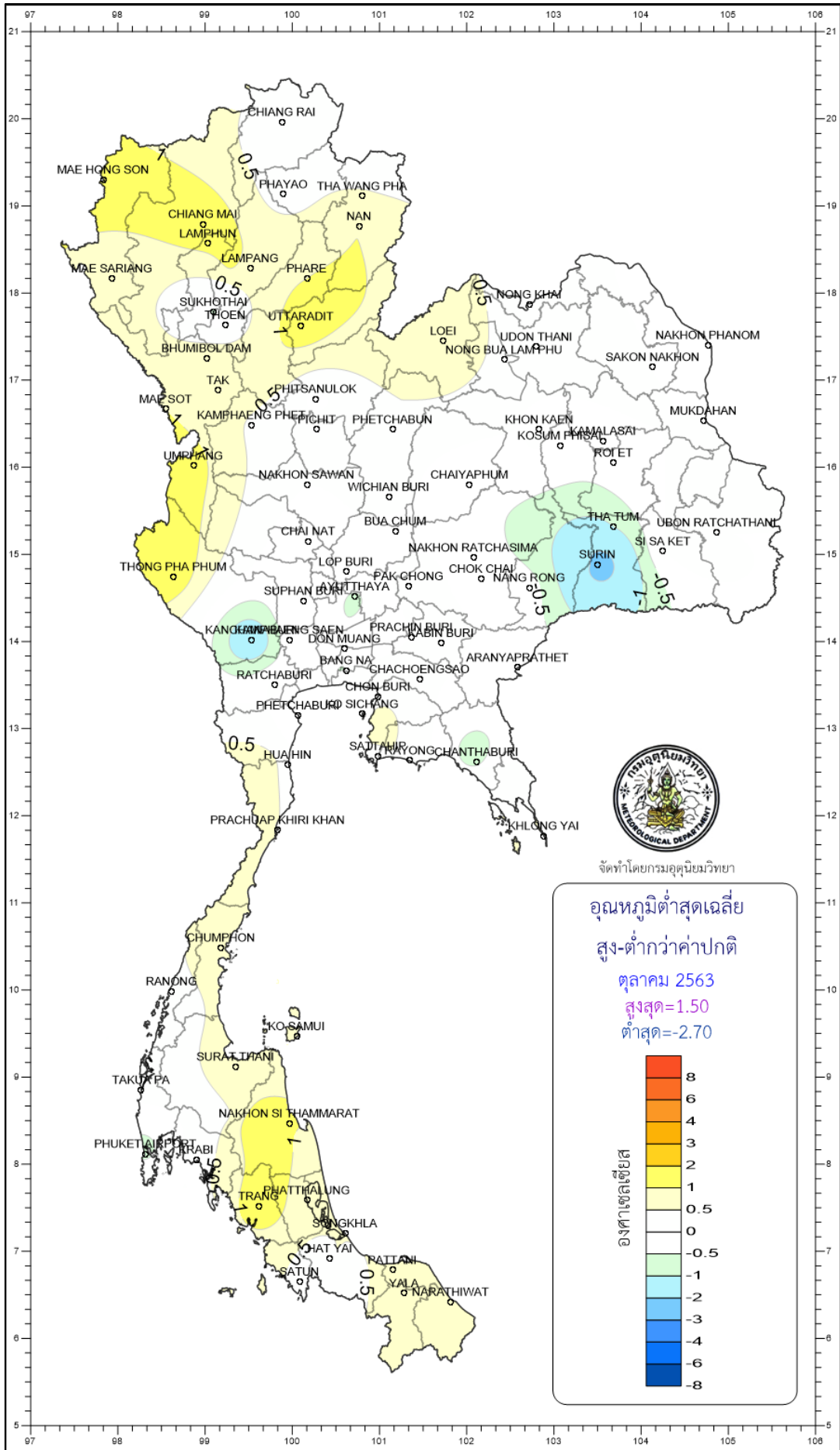


จัดทำโดยกรมอุตุนิยมวิทยา



จัดทำโดยกรมอุตุนิยมวิทยา





จัดทำโดยกรมอุตุนิยมวิทยา

อุณหภูมิต่ำสุดเฉลี่ย

สูง-ต่ำกว่าค่าปกติ

ตุลาคม 2563

สูงสุด=1.50

ต่ำสุด=-2.70

